



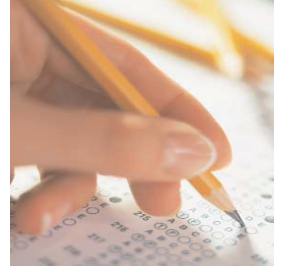
Blackline Masters

Extend the Online StudyGuide beyond the computer.



With the Online StudyGuide PDF Blackline Masters, you can print out any lesson or quiz in the program and extend your course to include paper and pencil exercises. Let the StudyGuide identify a weak skill area common to all of your students and then print out the corresponding lesson or quiz. You now have a handout or can give a quiz that helps your entire class.

PROVEN RESULTS DATA DRIVEN



Studyguide for the ACT Skill Review: Variable Linear Equations

VARIABLE LINEAR EQUATIONS

Basic algebra is an important skill to know for the ACT. In this lesson you will review the processes used to solve linear equations with one variable.

To Solve an Equation

What does it mean to solve an equation? When you are given an equation like $x + 7 = 12$, you try to find the value of the variable by substituting numbers for x until one of the numbers makes the equation true.

This technique is called *back-solving* or *answer choices* you can substitute in on the equation true.

Example 1:
If $x + 7 = 12$, what is the value for x ?
(A) 5 (B) 10 (C) 15 (D) 19 (E) 21

Solution:
When back-solving you should begin with choices are written either from least to greatest or from greatest to least. Choice C is too big you know choice C is too small then you next try choice B.

To use back-solving in solving example Does $15 - 7 = 12$? No, $15 - 7 = 8$. Not

Because 8 is smaller than 12 you need Try substituting 19 for x . Does $19 - 7 = 12$? Yes, $19 - 7 = 12$. The

© Copyright 2005, TCA, LLC

Studyguide for the ACT Skill Quiz C: Averages

Question 9.
The table shows the number of points Ramirez has scored in the last six basketball games. How many points does he need to score in the next game to score an average of 12 points per game?

	Game	Points
(F)	1	12
(G)	2	10
(H)	3	18
(I)	4	6
(J)	5	9
(K)	6	15

Question 10.

Studyguide for the ACT Skill Quiz: Multiples and Factors

Question 1.

Which of the following numbers is divisible by 15?

- (A) 21,115
- (B) 32,715
- (C) 51,112
- (D) 56,327
- (E) 84,042

Question 2.

Which of the following is (are) true of the value of $(252 \times 3 + 653 \times 281) - (28 \times 6 \times 0 + 356 \times 2 \times 2 \times 9)$?

- I. The last digit in the answer is 3.
- II. The answer is an even number.
- III. The answer is a negative number.

- (A) I only
- (B) II only
- (C) III only
- (D) I and II only
- (E) I, II, and III

Page M10 of 954

© Copyright 2005, TCA, LLC

Page M101 of 954

"TCA's products have proven to be one of the best investments for our school. They have become essential to our student success."

Dr. John Cox
Former Assistant Superintendent of Instruction
Charles County Public Schools, MD



Triumph College Admissions

(800) 233-4728 X 5
customer@tcaprep.com
www.tcaprep.com